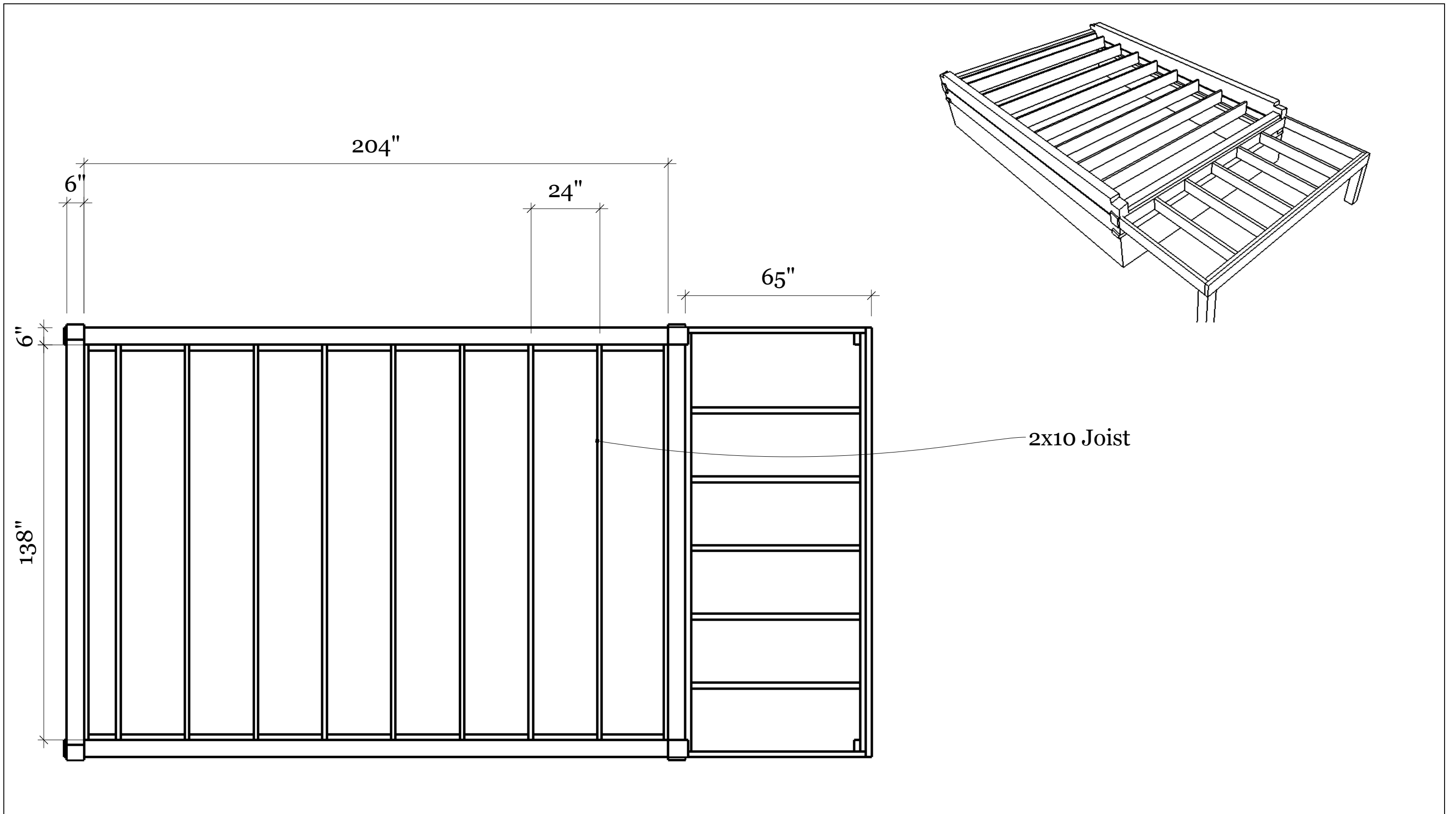


12.5' x 18' Trapper Cabin

[logdovetailjig.com](http://logdovetailjig.com)

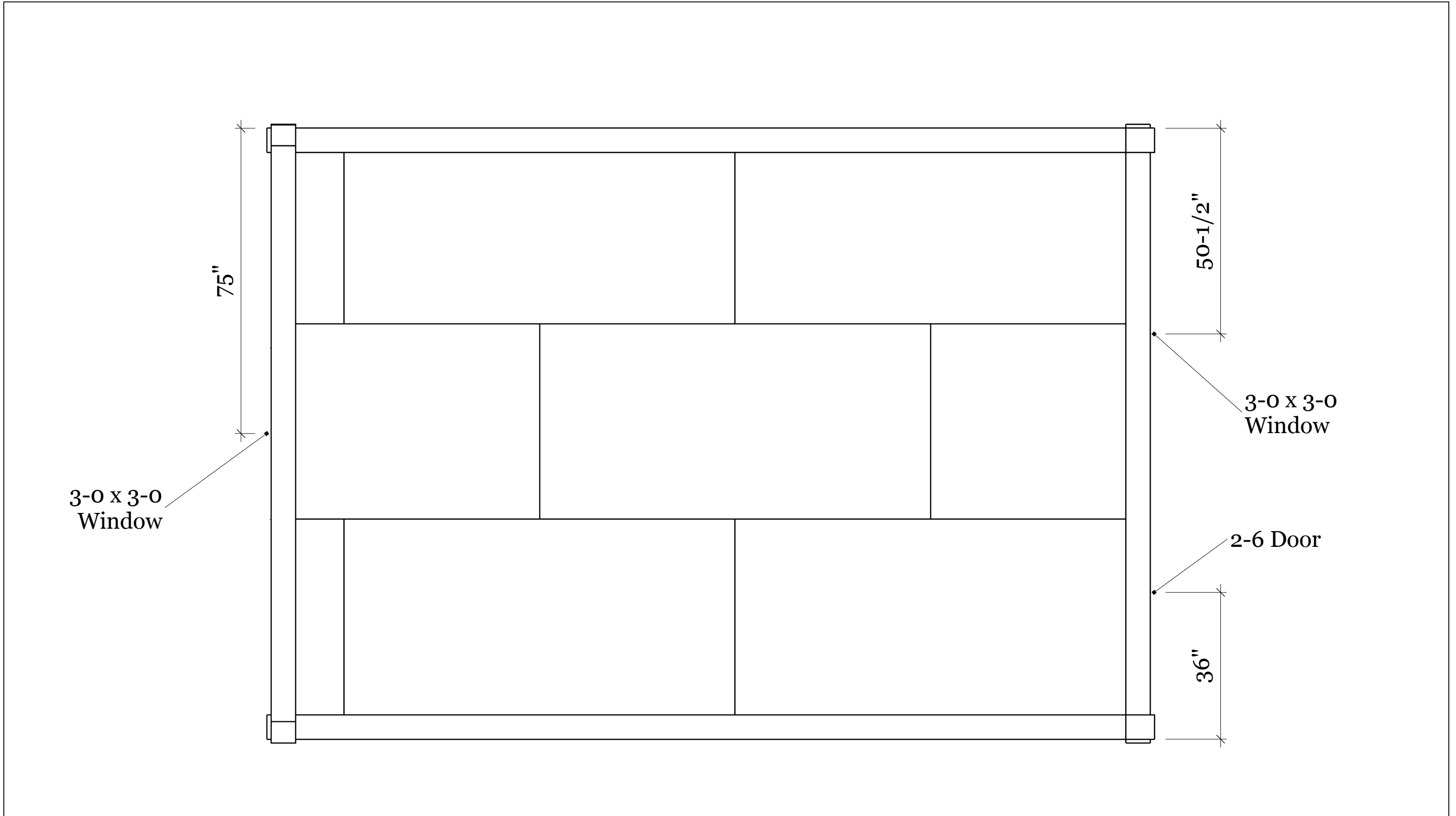
June 15, 2014



# Floor Framing

logdovetailjig.com  
 12.5' x 18' Trapper Cabin

REVISIONS	
MM/DD/YY	REMARKS
1	Copyright 2014 Fred Beal
2	...
3	...
4	...
5	...

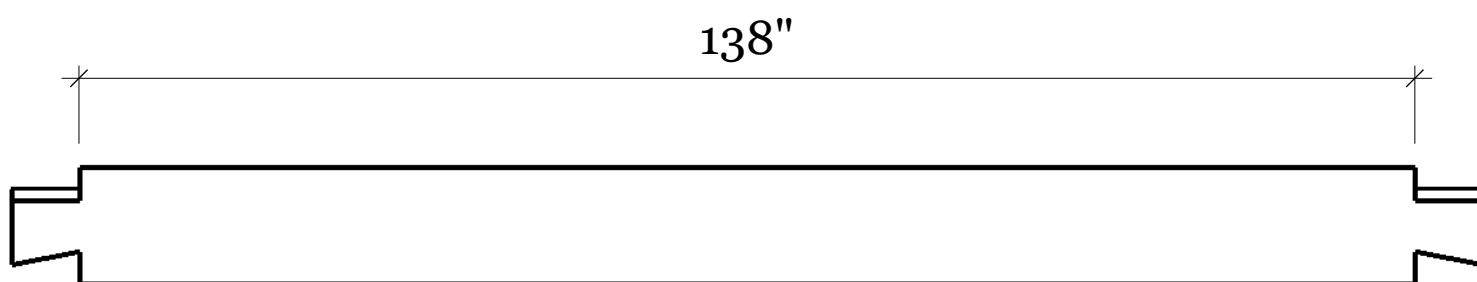
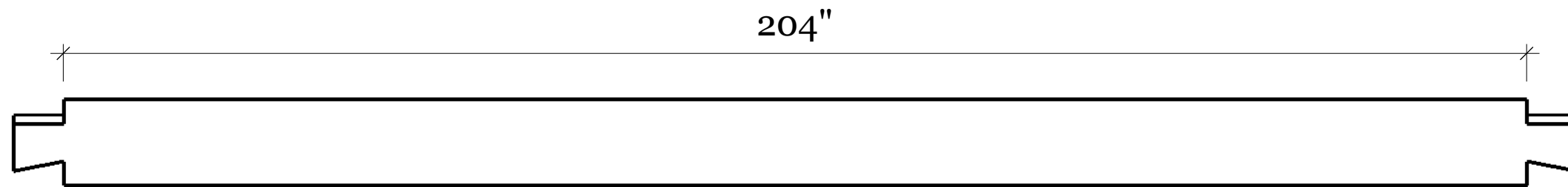
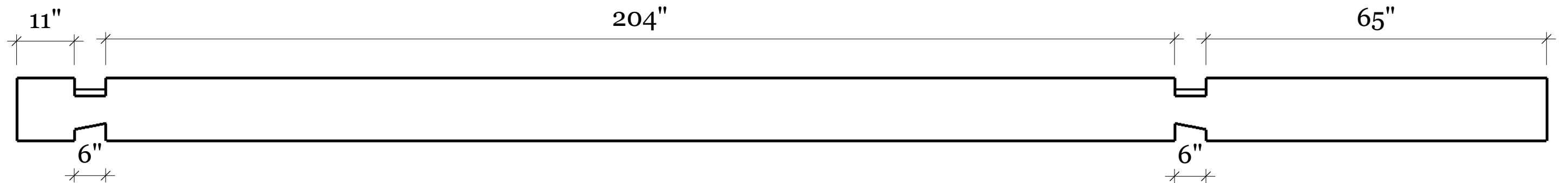
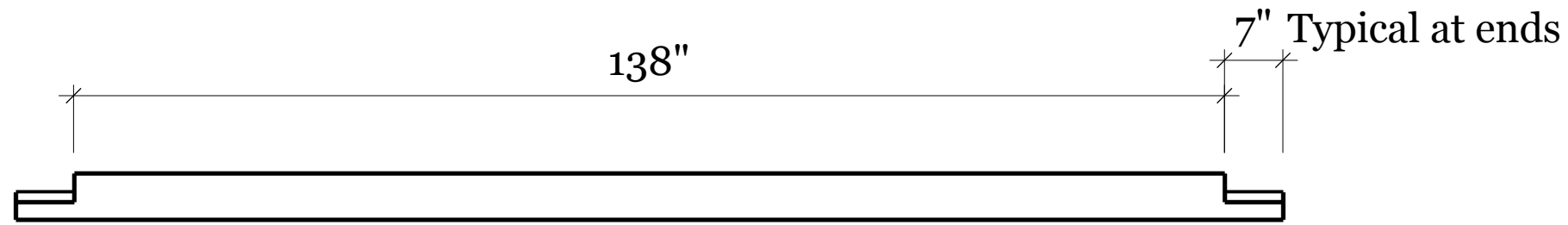


# Floor Plan

logdovetailjig.com

12.5' x 18' Trapper Cabin

REVISIONS	
MM/DD/YY	REMARKS
1	Copyright 2014 Fred Beal
2	...
3	...
4	...
5	...



The logs in these plans are 6x12 and there is a 3/4 inch gap between each log when stacked. Other log heights and gaps may be used.

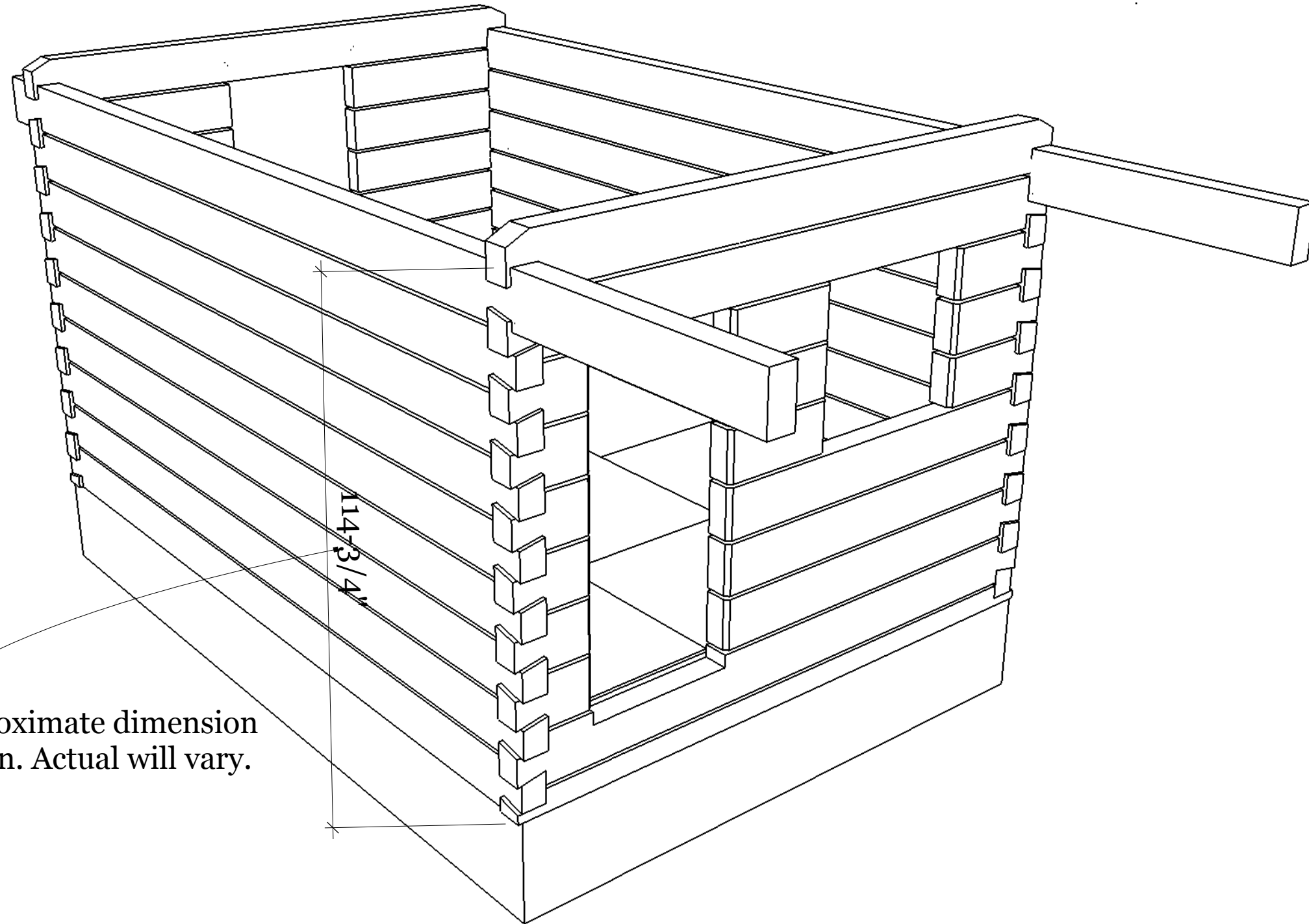
All logs are full length.  
Window and door openings to be cut after all logs are stacked

# Log Dimensions

logdovetailjig.com

12.5' x 18' Trapper Cabin

REVISIONS	
MM/DD/YY	REMARKS
1	Copyright 2014 Fred Beal
2	...
3	...
4	...
5	...



Approximate dimension shown. Actual will vary.

114-3/4"

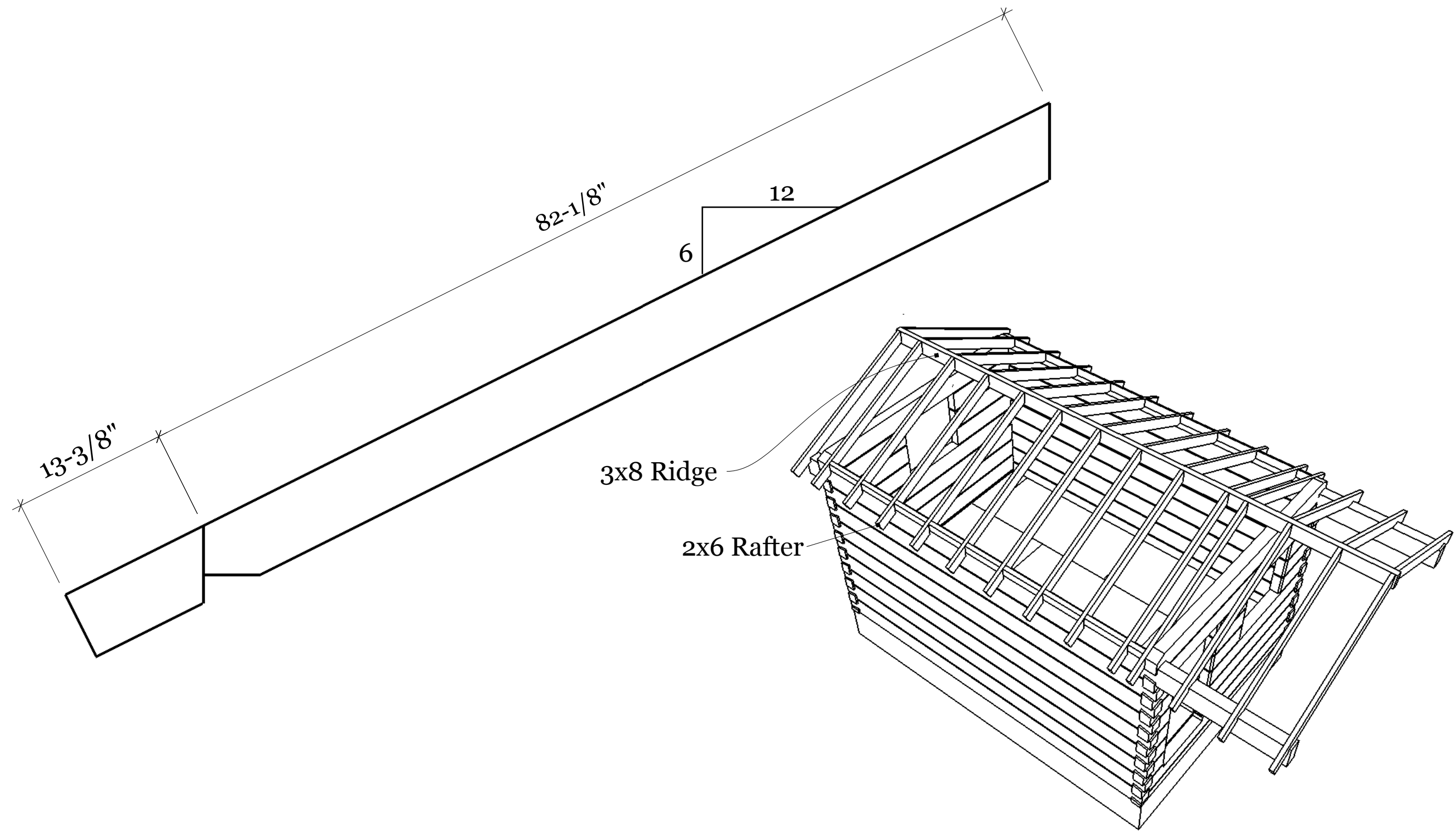
Isometric

logdovetailjig.com

12.5' x 18' Trapper Cabin

REVISIONS	
MM/DD/YY	REMARKS
1	Copyright 2014 Fred Beal
2	...
3	...
4	...
5	...

A 04



# Roof Framing

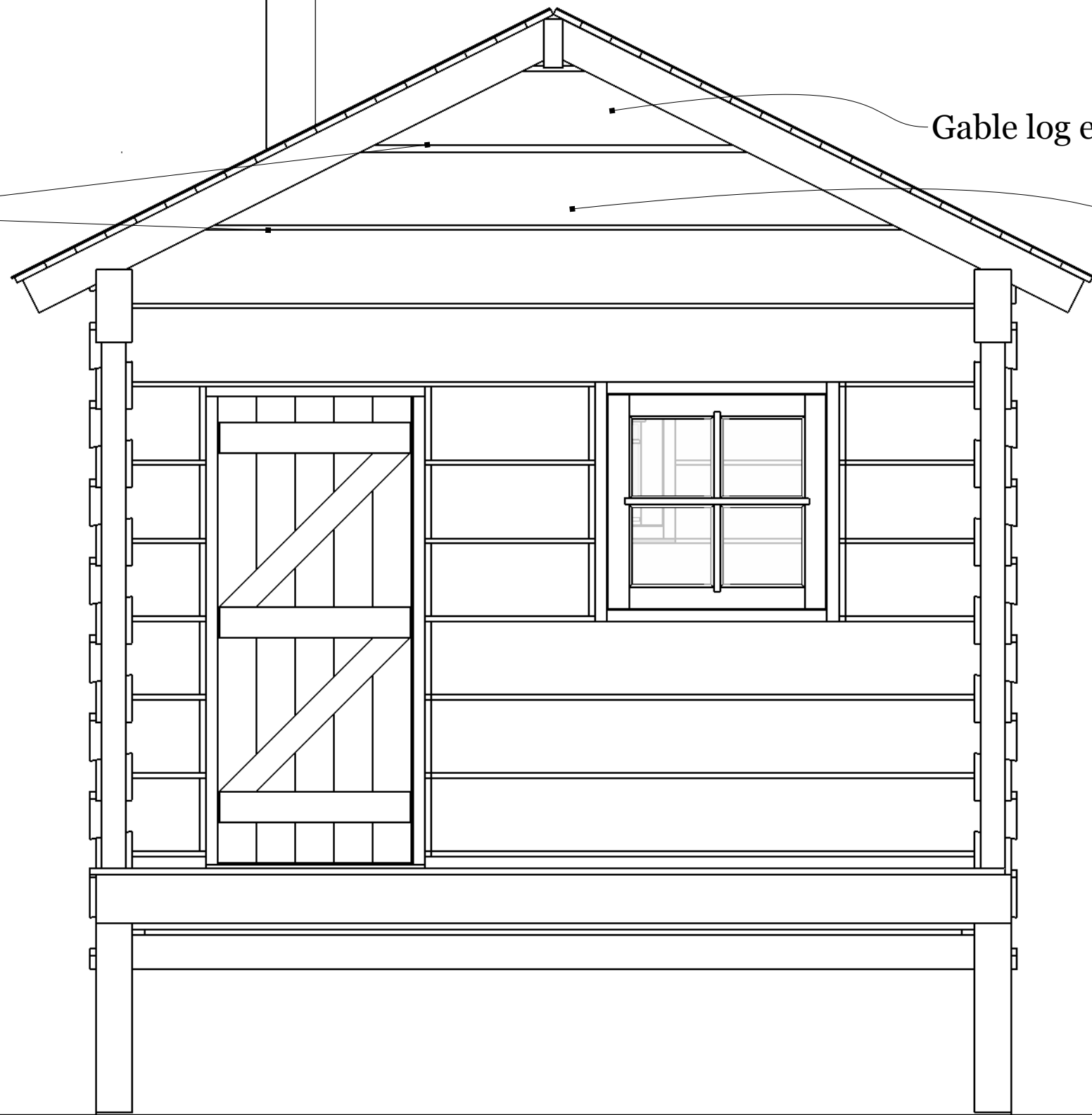
logdovetailjig.com

12.5' x 18' Trapper Cabin

### REVISIONS

	MM/DD/YY	REMARKS
1	___/___/___	Copyright 2014 Fred Beal
2	___/___/___	...
3	___/___/___	...
4	___/___/___	...
5	___/___/___	...

Recess 3/4 blocking behind chinking to support log above. Fasten logs together with large spikes or log screws.



Gable log ends cut flush with top of rafters.

Gables may be constructed of logs or may be conventionally framed.

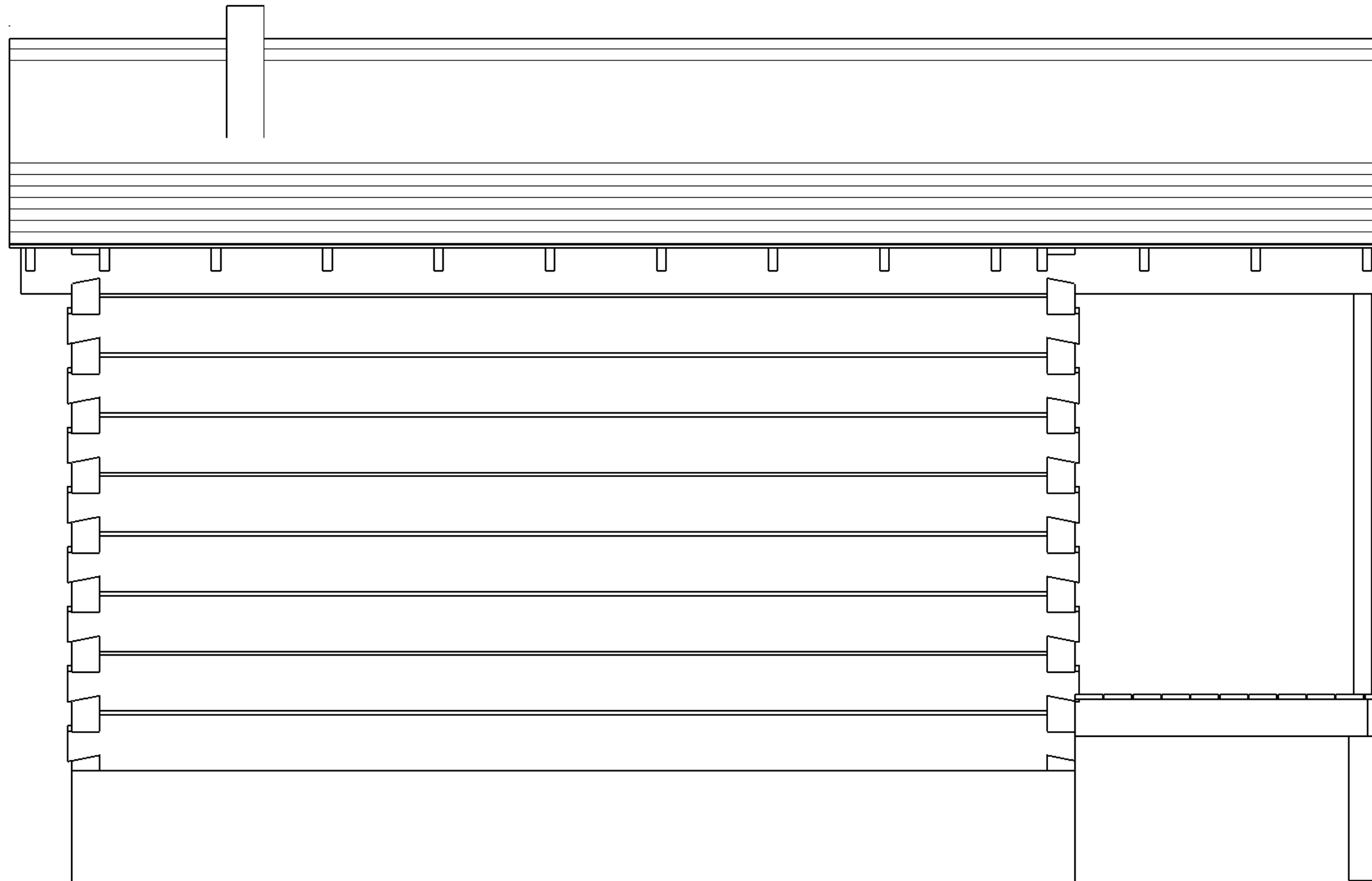
Front

logdovetailjig.com

12.5' x 18' Trapper Cabin

REVISIONS	
MM/DD/YY	REMARKS
1	Copyright 2014 Fred Beal
2	...
3	...
4	...
5	...

A 06



Elevation 1

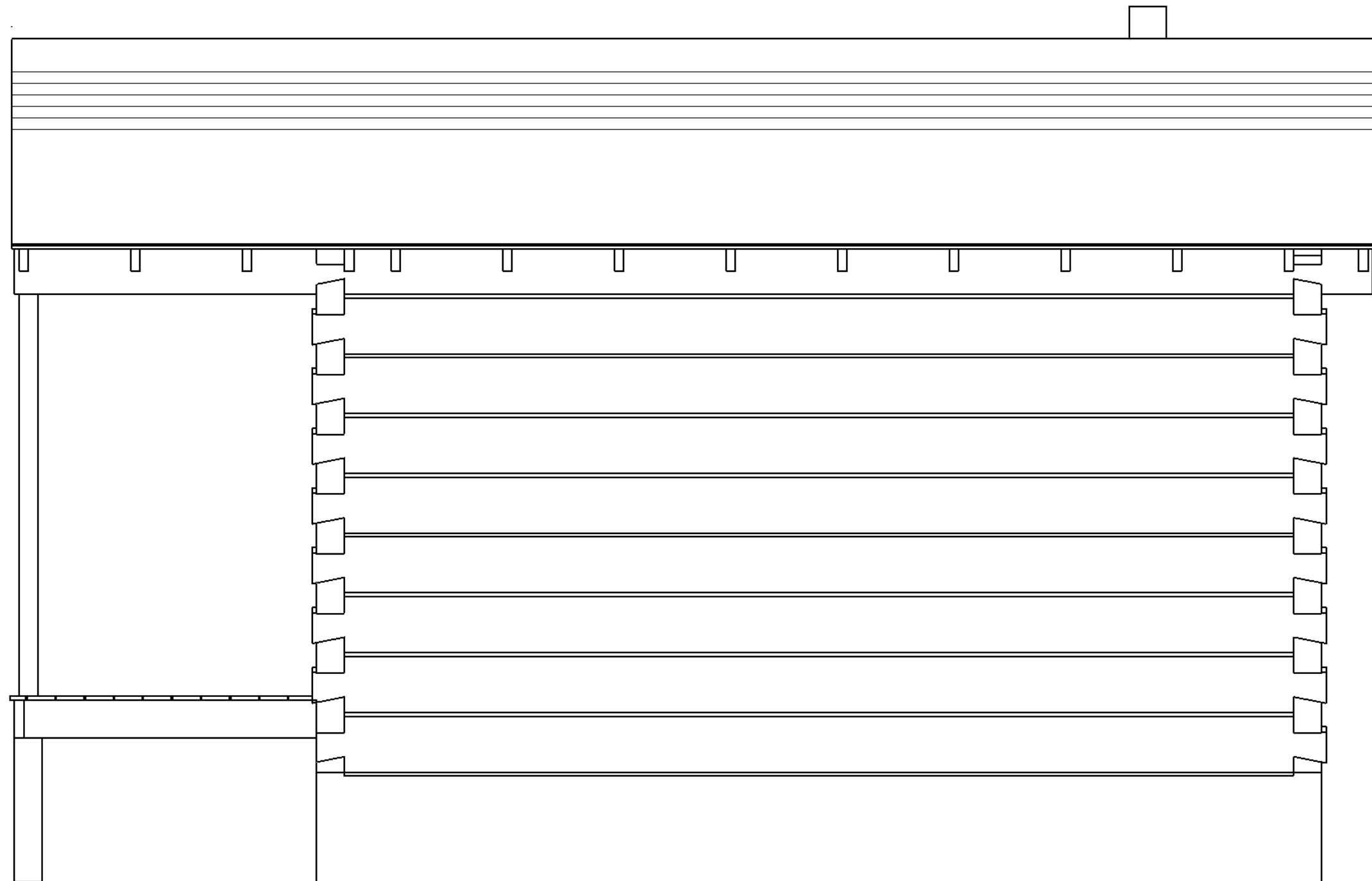
logdovetailjig.com

12.5' x 18' Trapper Cabin

REVISIONS		
MM/DD/YY	REMARKS	
1	MM/DD/YY	Copyright 2014 Fred Beal
2	MM/DD/YY	...
3	MM/DD/YY	...
4	MM/DD/YY	...
5	MM/DD/YY	...

A 07





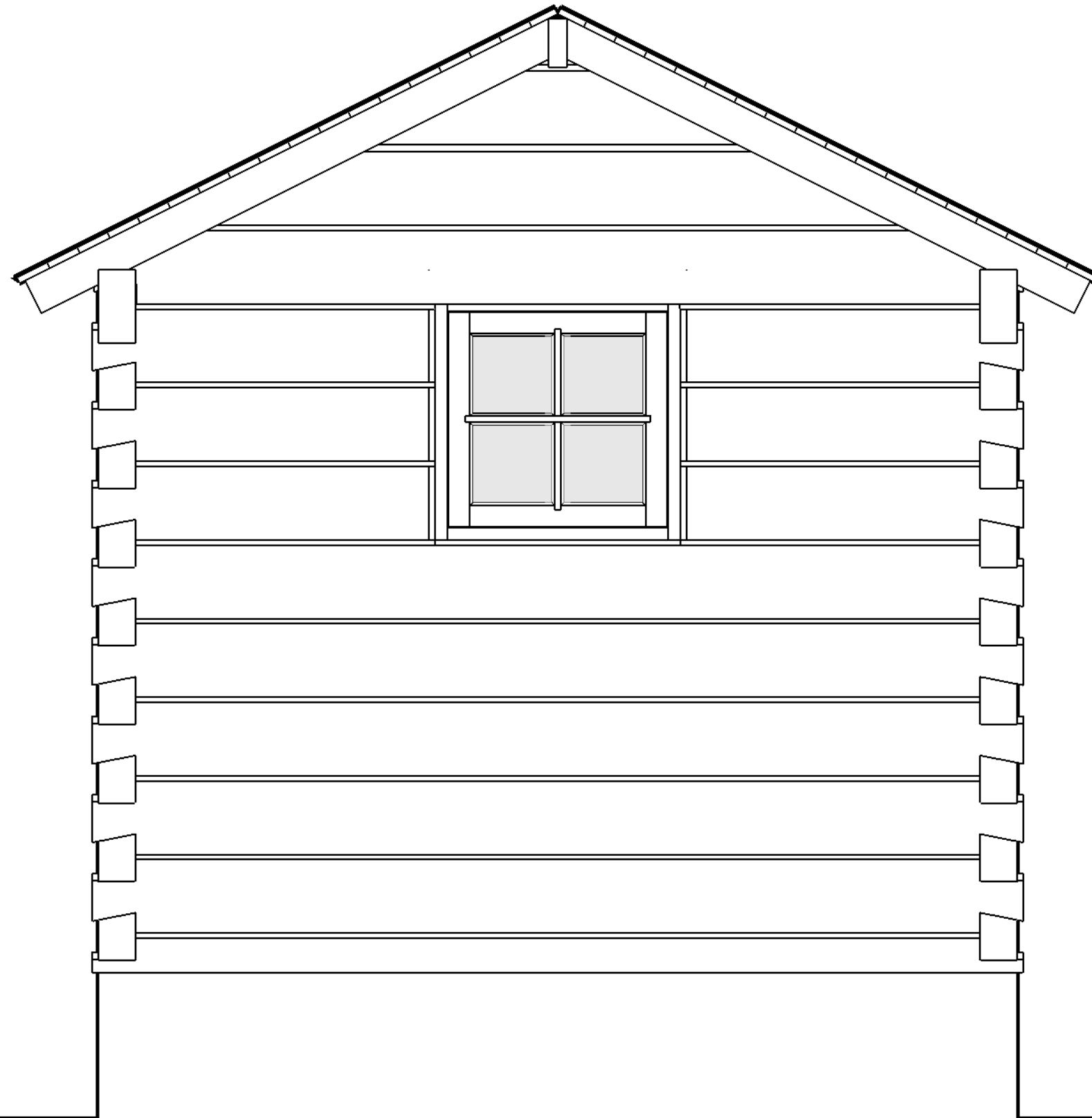
Elevation 2

logdovetailjig.com

12.5' x 18' Trapper Cabin

REVISIONS	
MM/DD/YY	REMARKS
1	Copyright 2014 Fred Beal
2	...
3	...
4	...
5	...

A 08



Back

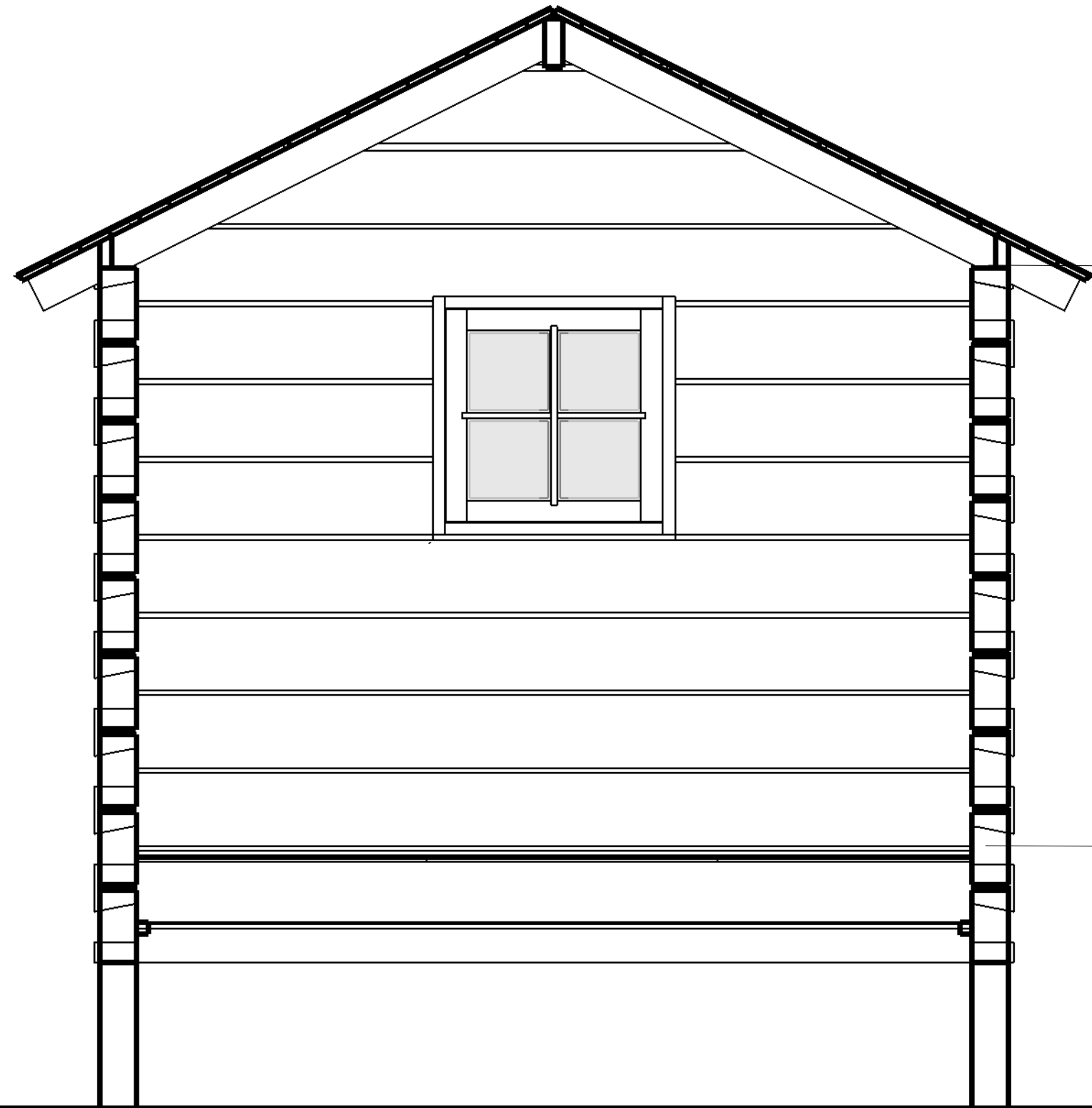
logdovetailjig.com

12.5' x 18' Trapper Cabin

REVISIONS

	MM/DD/YY	REMARKS
1	___/___/___	Copyright 2014 Fred Beal
2	___/___/___	...
3	___/___/___	...
4	___/___/___	...
5	___/___/___	...

A 09



96"

Actual dimension may vary

Finished Floor

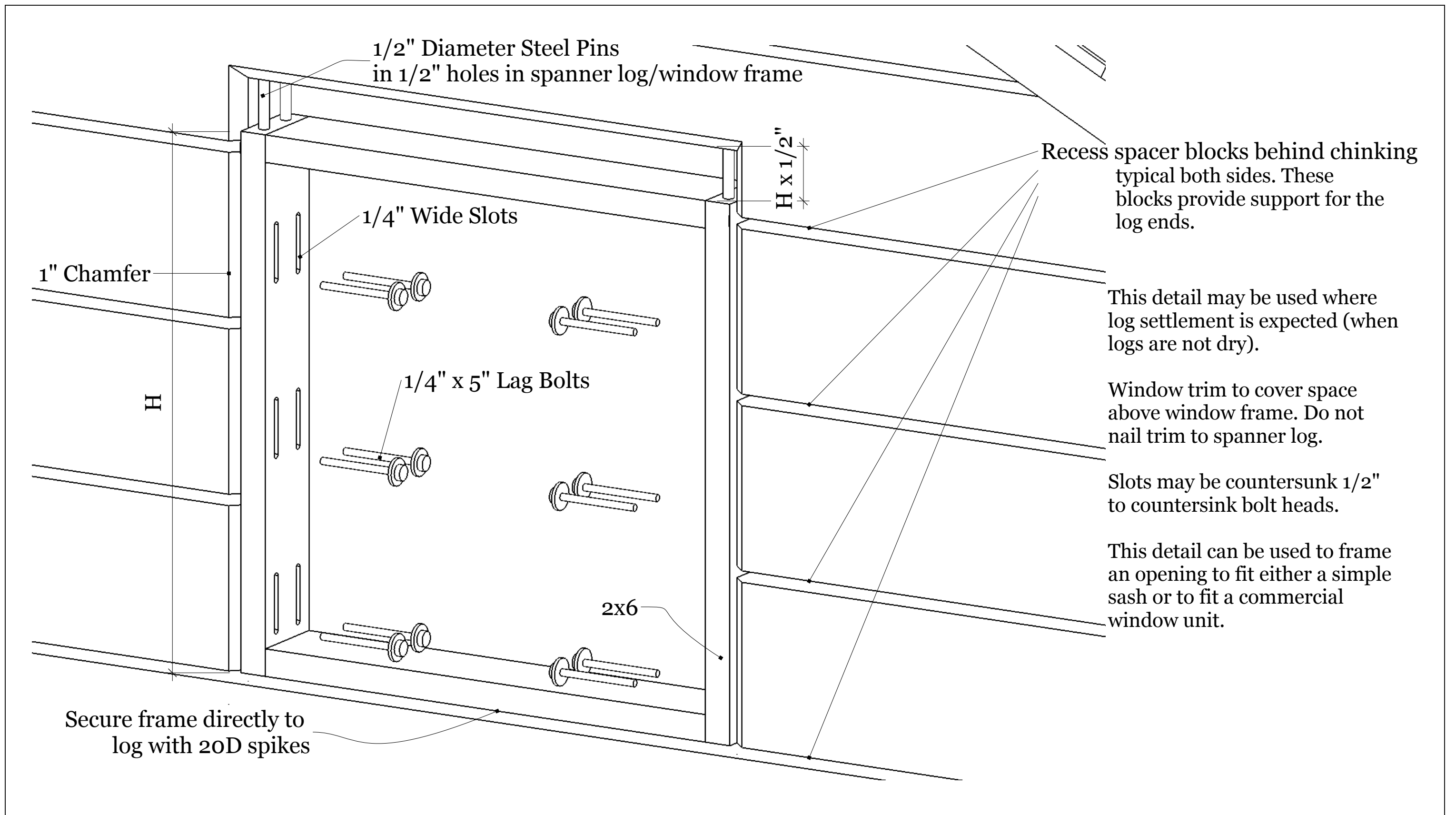
Section View

logdovetailjig.com

12.5' x 18' Trapper Cabin

REVISIONS

	MM/DD/YY	REMARKS
1	--/--/--	Copyright 2014 Fred Beal
2	--/--/--	...
3	--/--/--	...
4	--/--/--	...
5	--/--/--	...



# Optional Window Detail

logdovetailjig.com  
 12.5' x 18' Trapper Cabin

REVISIONS	
MM/DD/YY	REMARKS
1	Copyright 2014 Fred Beal
2	...
3	...
4	...
5	...